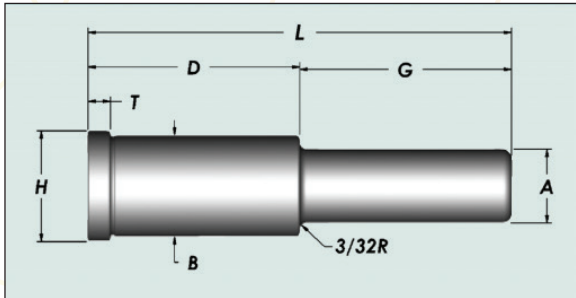


# H-13 Components

## 1/2" SHOULDER PINS

www.h13components.com



Leader Pins General Dimensions and Tolerances				
Nominal Diameter	A	B	H	T
1/2	+0.0000 -0.0005	+0.0005 -0.0000	+0.000 -0.010	+0.000 -0.005
	.499	.751	.853	3/16

PRESS FIT LENGTH (D)	G	OVERALL LENGTH (L)	P/N
7/8	7/8	1-3/4	500-707
7/8	1-3/8	2-1/4	500-713
7/8	1-7/8	2-3/4	500-717
7/8	2-3/8	3-1/4	500-723
1-3/8	7/8	2-1/4	501-307
1-3/8	1-3/8	2-3/4	501-313
1-3/8	1-7/8	3-1/4	501-317
1-7/8	7/8	2-3/4	501-707
1-7/8	1-3/8	3-1/4	501-713
1-7/8	1-7/8	3-3/4	501-717
2-3/8	7/8	3-1/4	502-307
2-7/8	1-3/8	4-1/4	502-713



OEE Companies